

30 Lumens LED mini Projector with Windows CE Support WIFI WORD EXCEL PPT PDF File View

User Manual



Contents

Intended Use Statement.....	3
Safety Information.....	3
Introduction.....	3
Package Contents.....	3
Parts.....	4
Getting Start.....	6
Making Connections.....	6
Basic Operating Instructions.....	6
Basic File Operations.....	7
Home Screen.....	7
WIFI.....	8
Media Files.....	9
Document and PDF Files.....	11
Cleaning the Projector.....	12
Troubleshooting.....	12
Specifications.....	12

Intended Use Statement

This smart projector is designed for operating with the specified battery and power adapter in normal office, outdoor or home environments.

- 10°–30°C (50°–86°F)
- 10–80% RH (without condensation)
- 0–1829 m (0–6000 feet) above sea level

The environment should be far away from airborne smoke, grease, oil and other contaminants that can affect the operation or performance of the projector.

Use of this product in adverse conditions will void the product warranty.

Safety Information

Please read, understand, and follow all safety information contained in these instructions prior to the use of this projector. Retain these instructions for future reference.

Explanation of Signal Word Consequences

Warning: Indicates a potentially hazardous situation, which, if not avoided, could result in death or serious injury and/or property damage.

Caution: Indicates a potentially hazardous situation, which, if not avoided, may result in minor or moderate injury and/or property

To reduce the risk associated with hazardous voltage:

- Do not modify this product in any way. Use only the manufacturer -approved replacement components.
- Do not use the wall power supply in a wet environment.
- Do not use with a damaged wall power supply. Replace damaged part prior to use.

To reduce the risk associated with fire and explosion:

- Do not immerse the projector in any liquid or get wet.
- Use only the manufacturer-approved power supply and lithium ion polymer battery provided.
- Do not operate this projector in any environment above 30°C (86°F).
- Do not expose the projector to direct sunlight in a closed space such as a vehicle.
- Do not carry the projector in pockets, purses or handbags where it may contact metal objects.

To reduce the risks associated with driver distraction:

- Do not use this projector in a moving motor vehicle.

To reduce the risks associated with choking:

- Keep micro-SD card, AV adapters and other small parts away from young children.

Introduction

Thank you for choosing our smart projector. This product has been produced in accordance with our quality and safety standards to provide smooth and trouble-free use in the years to come. For optimum performance, please follow the operating instructions carefully.

Product Features

The smart projector is an all-in-one mini projector. It supports common business application file formats such as PowerPoint, PDF, Word, Excel and either standard movie files or music files. Using the interchangeable micro-SD card or the built in flash memory, you can load your presentation from a computer, cell phone, or smart-phone and view it on the smart projector.

Design: Touch pad operation same as notebooks with elegant buttons design

Lenses sourcing: 3M MM200 RGB color with LCOS technology

Operating system: Microsoft Windows CE 5.0

WIFI: support 802.11a/b/g(Optional)

Storage: built-in flash memory 256MB~16GB optional and micro-SD card extension

Media: Connects to your favorite digital media sources: MP3 players, PCs, DVD players, digital cameras and smart-phones.

Features: Fully equipped with sound, 1800mAh Polymer lithium battery 90 minutes of battery life, screen size up to 80 inches, 30 lumens of brightness.

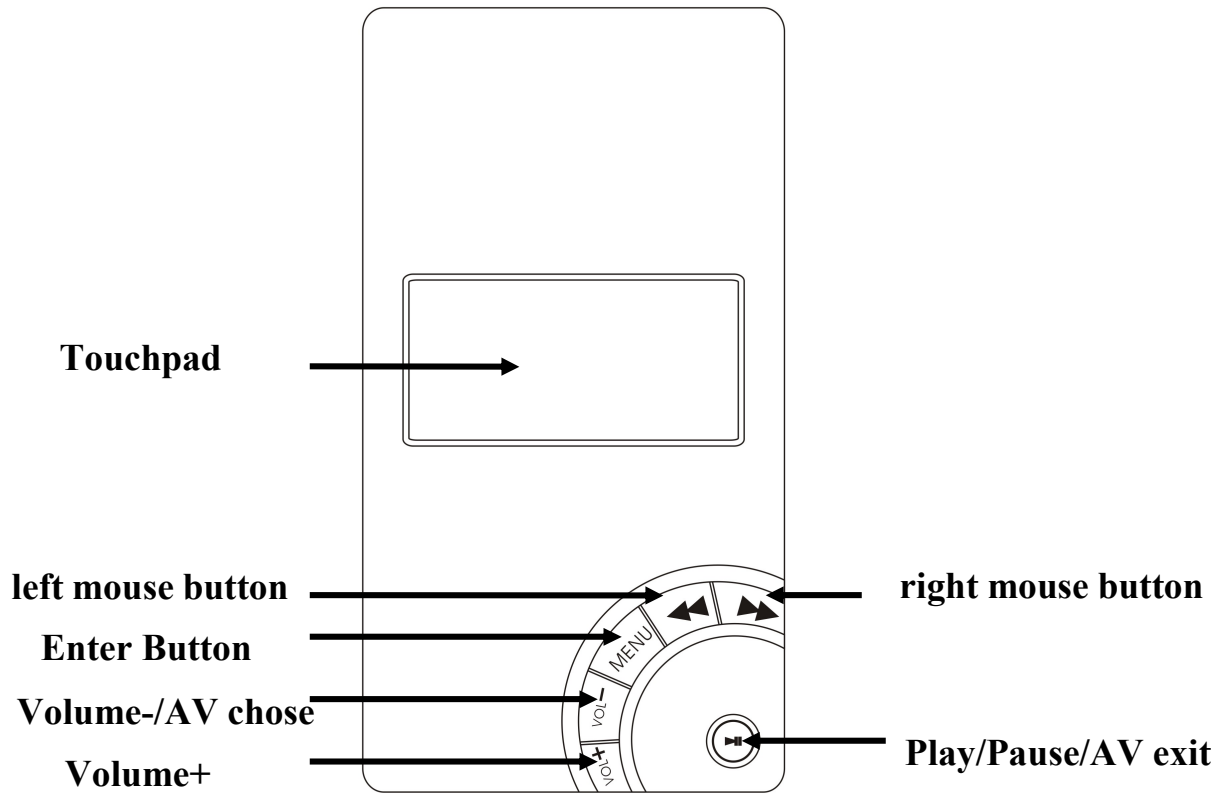
Compatibility: View files created in Microsoft® Word, Microsoft® PowerPoint®, Microsoft® Excel® or Adobe® Acrobat PDF. Share files, photos and movies from your computer, cell phone, or smart-phone.

Package Contents

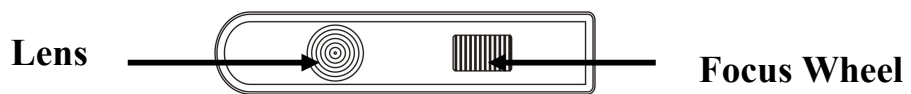
- 1 Projector
- 2 Table-Top Tripod
- 3 Power Adapter
- 4 AV Adapters
- 5 User Manual
- 6 AV Cable
- 7 VGA Cable
- 8 USB Cable

Parts

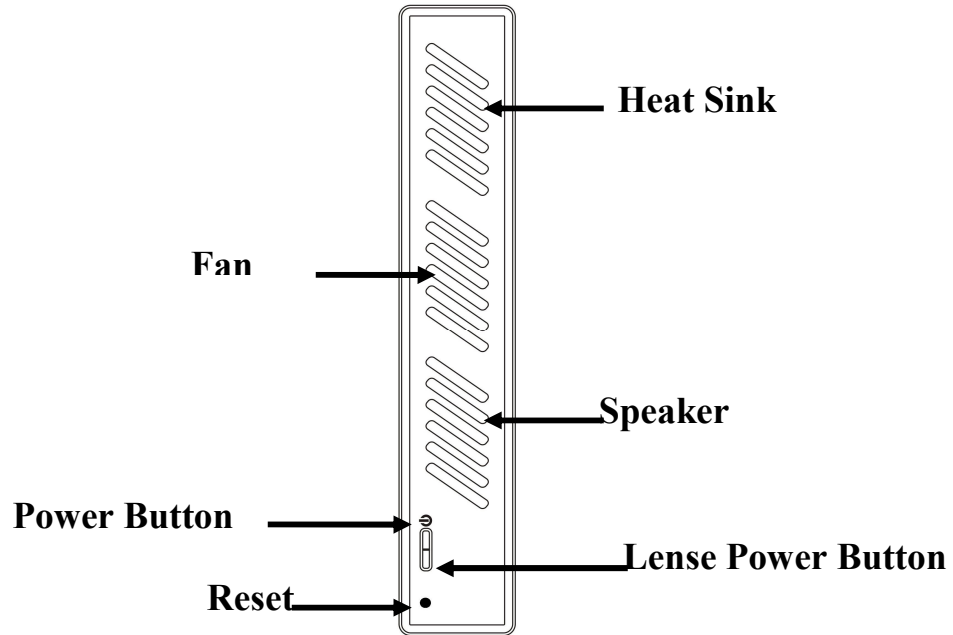
Front View



Top View



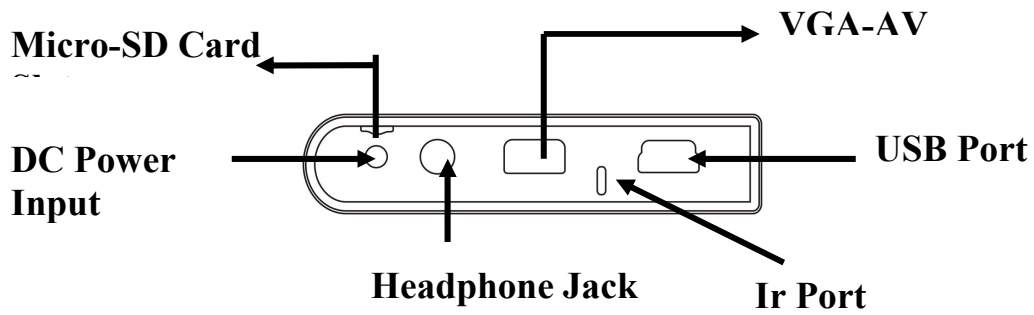
Right Side View



Push and hold the power button for three seconds. Release the power button when the projector begins to project an image

Pull and hold the power button for three seconds, Release the power button when the projected image is gone but the projector still on, this is save power mode normally use while play music

REAR VIEW



Getting Start

Charge the Battery

In normal brightness mode, the projector rechargeable battery gives you up to one hour of battery life. When the battery needs to be charged, the status indicator will flash red or the low battery message will display. The battery should be fully charged before using. Charge the battery by connecting the power adapter to the projector.

- 1 Turn the projector power off.
- 2 Connect the power adapter to the projector's DC input.
- 3 Connect the other end of the power adapter into the electrical outlet.
- 4 The status indicator will change while the battery is charging.
- 5 Allow four hours to fully charge the battery. When charging is complete, the status indicator will turn off.

Making Connections

The projector will display informational icons depending on the input device and signal being detected. If no devices or input cables are connected to the projector, the home screen will display.

Connecting to a Composite Video Device

Use the AV cable to input video from camcorders, digital cameras, DVD players and digital media players into the VGA-AV input on the projector.

- 1 Connect the AV cable to the projector's VGA-AV input.
- 2 Connect the other end of the AV cable to the video device's video outputs
- 3 Click "video mode switching" icon on the home menu, choose "AV" "win ce" "VGA" depend on different device

Basic Operating Instructions

Powering On

Push and hold the power button for three seconds. Release the power button when the projector begins to project an image.

Powering Off

Push and hold the power button for three seconds. Release the power button when the projected image is gone.

Adjusting the Focus

Turn the focus wheel to sharpen the image.

Adjusting the Volume

The volume can be adjusted during video or song playback, or during a photo slideshow. Press the Vol+ or Vol- button on the directional pad to adjust the sound one level. You can also adjust the volume by touchpad.

Checking the Battery Level

The amount of charge currently in the battery displays in the status bar battery icon at the top of the home screen.

Attaching the Tripod

The projector includes a table-top tripod that mounts to the bottom of the projector.

Transfer Files to Projector

The projector has optional 256MB to 16GB internal memory. To access the projector's internal memory or the micro-SD Card memory:

- 1 Connect the USB cable to the projector.
- 2 Connect the USB cable to the computer.
- 3 Turn on the projector
- 4 The projector will be detected as a removable drive labeled "NAND" by the computer. The computer will detect a second removable drive when a micro-SD Card is installed into the projector.
- 5 Now the projector is ready to receive a file from your computer.

Using the micro-SD Card Slot

The projector has a micro-SD card slot that can read up to a 16 GB card. You can either place files on the card before you insert it into the projector's card slot or while the projector is connected to a USB port on a computer.

Insert micro-SD Card

Insert the micro-SD card into the micro-SD slot until it "clicks" into place.

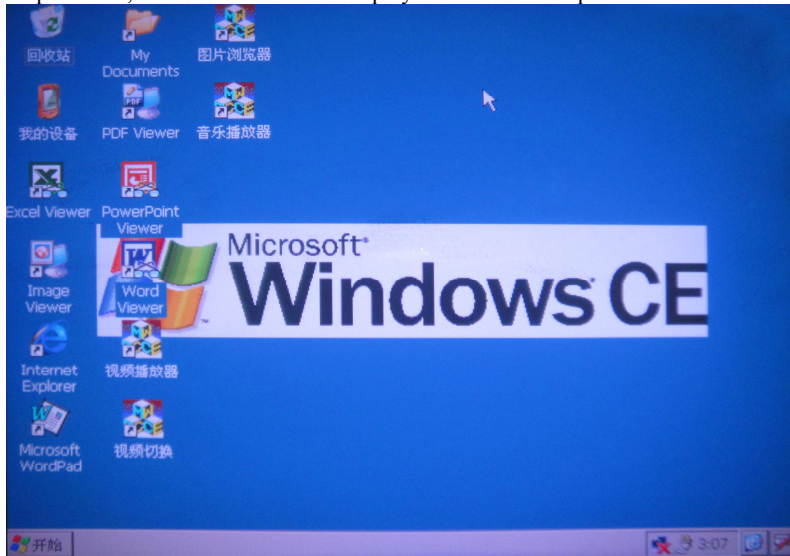
Eject micro-SD Card

Push the micro-SD card into the micro-SD slot until it "clicks". Release the micro-SD card and the card will eject.

Basic File Operations

Home Screen

At power on, the home screen will display if there are no input cables or video devices connected to the projector.

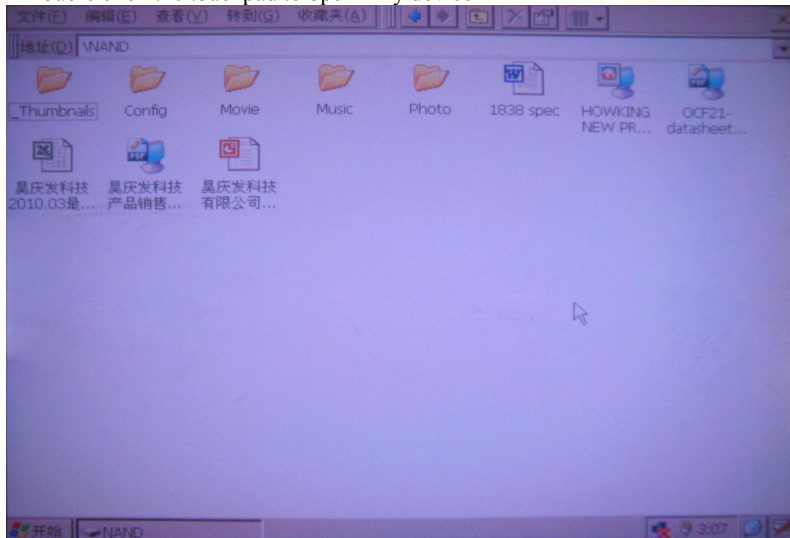


Home Screen

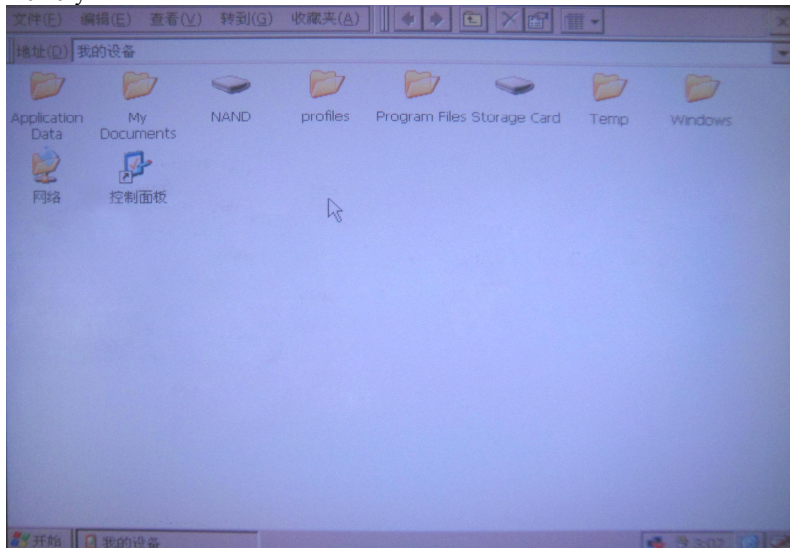
The projector provides an easy way to view all files of a specific type with a single icon.

Selecting a File and Opening It

- 1 Navigate to "My device" by touchpad
- 2 Double click the touchpad to open "My device"

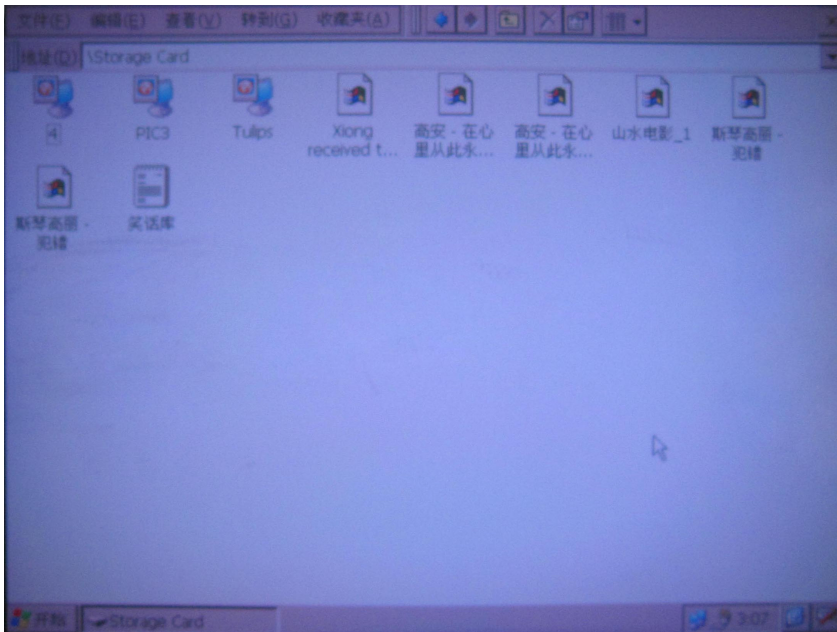


- 3 Double click the touchpad to open "NAND", and then you can manage all the files that stored on the internal flash memory



View File List on MICRO SD Memory Card

- 1 Navigate to “My device” by touchpad
- 2 Double click the touchpad to open “My device”
- 3 Double click the touchpad to open “Storage Card” and then you can manage all the files that stored on the micro-SD card

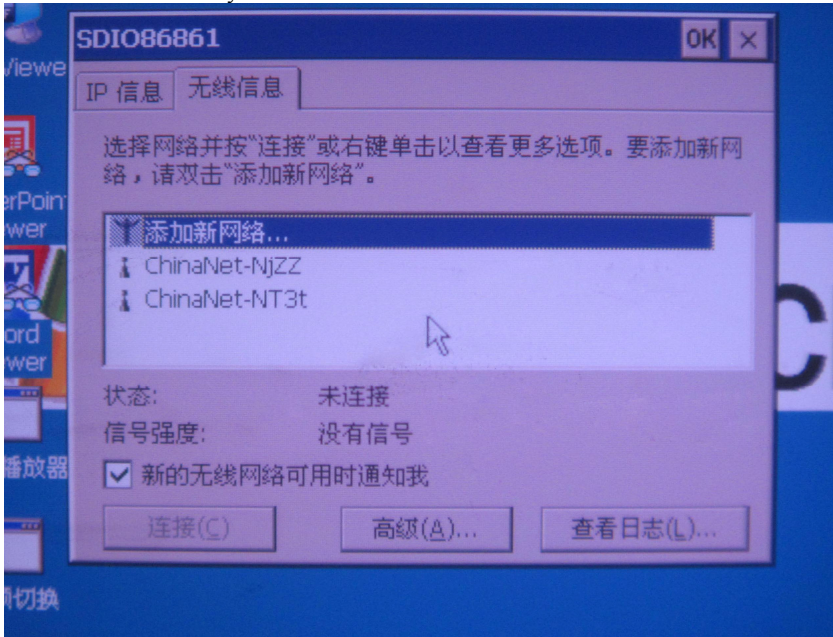


Return to Home Screen

Click the close Icon to return to the home screen.

WIFI (Optional)

Click the internet icon on the right bottom of the home screen. It will appear the internet information and automatically search for the internet. you can choose the suitable net to connect



Media Files

Video Format: RM/RMVB、MPG、WMV、AVI、MP4、VOB

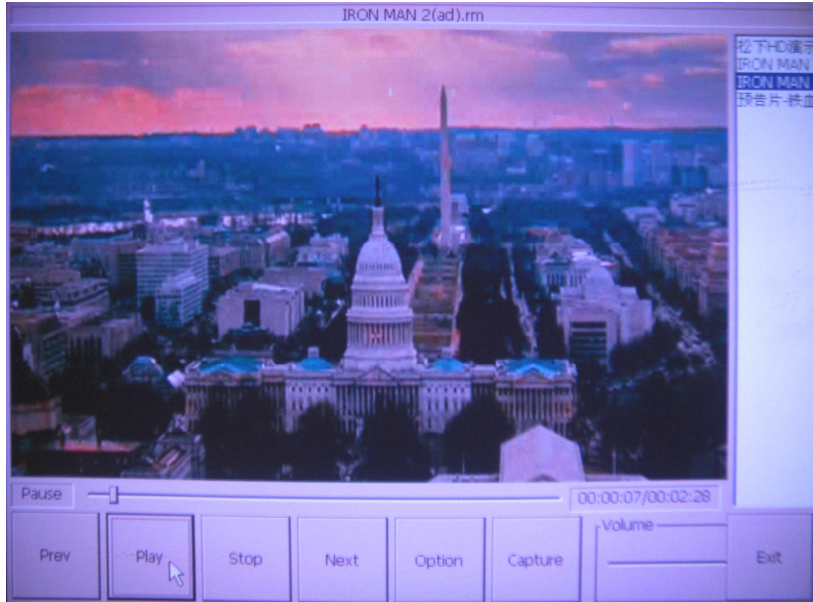
Music Format: MP3、WMA、OGG、APE、FLAC

Image Type: GIF,BMP,JPG,PNG

There are shortcut Icons on the home screen for easy operation

Video play

- 1 Navigate to “Video player” by touchpad
- 2 Double click the touchpad to open the player
- 3.click the video you want to play from the video list on the top right
- 4.Click “play” button to play the video
- 5.Click “Exit” or press “Menu” button return to home screen



Audio play

- 1 Navigate to “Audio player” by touchpad
- 2 Double click the touchpad to open the player
- 3.click the music you want to play from the music list on
- 4.Click “play” button to play the Music
- 5.Click “Exit” or press “Menu” button return to home screen

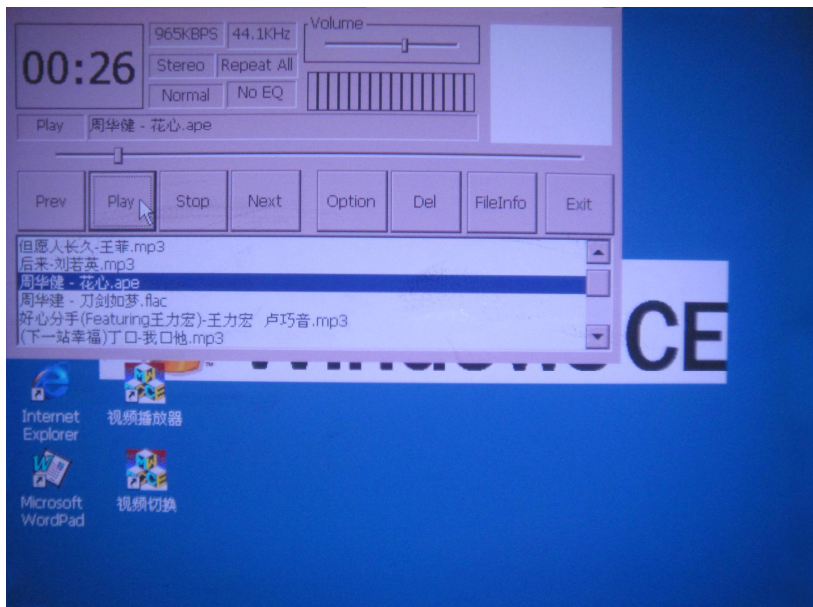
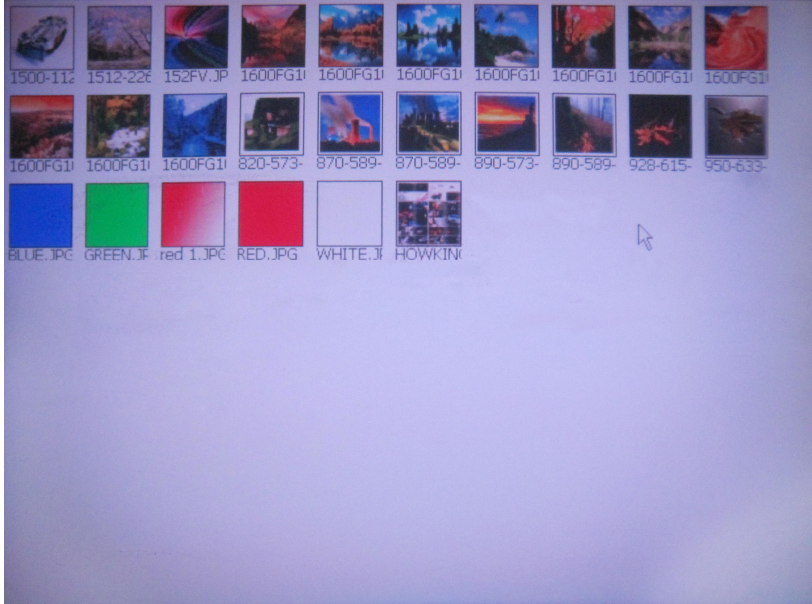


Photo Viewer

1 Navigate to "Photo Viewer" by touchpad

2 Double click the touchpad to open the viewer



3. Double click the photo you want to view from the list

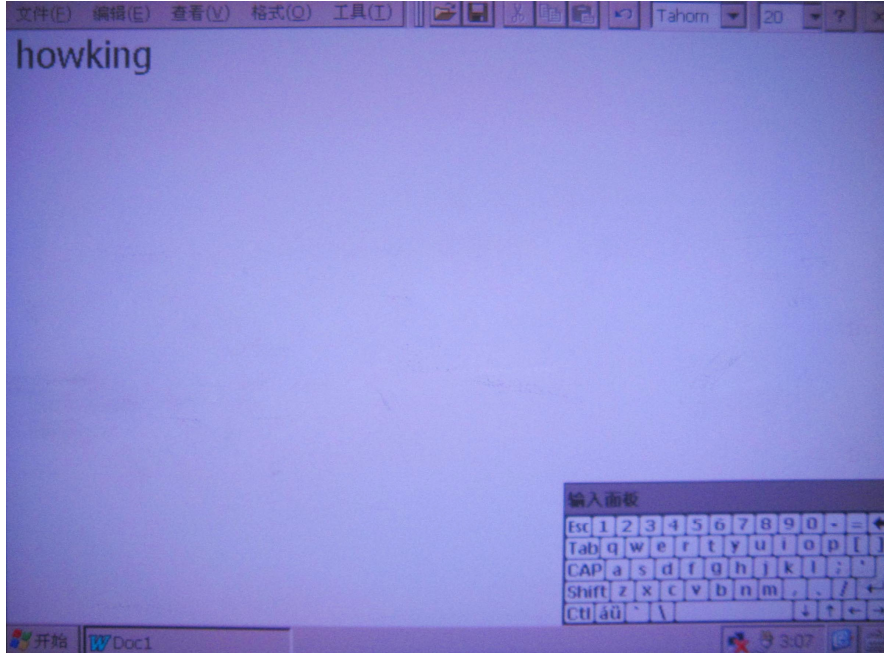


Document and PDF Files

This projector support following office software: Wordpad, Word ,Excel,PDF,PPT ect,you can edite by wordpad,while other files can only be browsed

Viewing a Document

- 1 Double Click the shortcut icons on the home screen
- 2 Click “File” and then “Open”
- 3 Click “NAND” or “Storage Card”, appear all the files stored on the internet memory or micro SD card,click the file you want to view



Cleaning the Projector

- 1 Turn off the projector and disconnect power and other cables.
- 2 Use a soft cloth to wipe off dust.If the dust is difficult to remove, dampen the cloth with clean water and then wipe the projector clean. Then use a clean cloth to dry the projector.

Troubleshooting

The image is not visible or is very dim.

- The projector is a battery-operated device and requires controlled lighting conditions. The image may appear very dim in brightly lit rooms.
- Make sure the status indicator is yellow. This indicates that the projector is powered on and projecting an image.
- Project the image onto a flat, white surface.
- Decrease the light on the surface where the image is being projected.
- Decrease the size of the image.
- When there is nothing connected to the projector, it will project the home screen.

The projector is making a noise.

- The projector has a small fan for cooling the LED light source. The fan turns on and off automatically based on the projector’s internal temperature. The fan will turn on more often in warm environments or at high altitudes.
- The speakers make noise when the volume is set to high and nothing is connected to the projector audio inputs. This is typical. Reduce the projector’s volume setting to zero.
- The speakers may make noise when the component AV cable is not correctly connected to the video device.

Specifications

System	
Type	Mobile Projector
Processor	Teleships TCC7901 498MHZ*2 Dual CPU
Memory Storage	2GB (1-16GB Optional)
SDRAM	64MB/128MB
Operating system	Windows CE 5.0
Engine Specification	
Panel Type	LCOS
Resolution	640*480
Contrast Ratio(ANSI)	97:1(ratio)
Aspect Ratio	4:3
Throw Ratio	0.84(ratio)
Minimum Projection Distance	17.8cm
Maximum Projection Distance	200cm
Minimum Image Diagonal	7 inch
Maximum Image Diagonal	80 inch
To Restart time	<20S
Lamp house	RGB three-color LED
LED lamp live	More than 20,000 hours
Luminous Flux	30 LUM/@2.5W
Contrast Ratio	200: 1(ratio)
Function	
WIFI	support 802.11a/b/g(Optional)
USB type	DEVICE USB2.0, HOST USB1.1
Wireless mouse and keyboard	Support
VGA input	Support , resolution up to 1080i
AV(CVBS+L/R) input	support
Speaker	Built-in 1.5W
Headphones	32mW+32mW, 3.5mm headset jack
File view	WORD,EXCEL,PPT,PDF
Multimedia Player	Video Format: RM/RMVB、MPG、WMV、AVI、MP4、VOB、 Maximum resolution up to:800*480 Music Format: MP3、WMA、OGG、APE、FLAC Lyrics Format: LRC MP3 bit stream : 32Kbps–320Kbps WMA bit stream: 48Kbps–320Kbps E-book: TXT Image Type: GIF,BMP,JPG,PNG
External Storage	T-FLASH card support maximum :16GB Host USB support for USB storage devices, including the U disk, mobile hard disk, etc.
Power Specifications	
Battery	1800mAh Polymer lithium battery Charging Mode: DC interface
Power Adapter	INPUT: AC 200-240V, OUTPUT: DC 5V /2A
Sustainable Time	1 hour
Power consumption	<10W
Appearance Description	
Antenna	Built-in WIFI antenna
Weight	115g
size	128.1×70×20mm

Other features	
System Language	Chinese/English
Networking for sharing files	Required matching WIFI
Other features	SNR≥85dB
Temperature Range	Operating temperature: 0 °C to 45 °C Storage temperature: room temperature

Please note: Design and characters may change without prior notice.